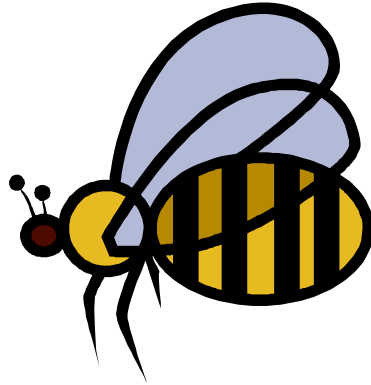


IVY GROVE SURGERY
DO YOU NEED THE
MINOR INJURIES UNIT?



SPRAINS & BREAKS



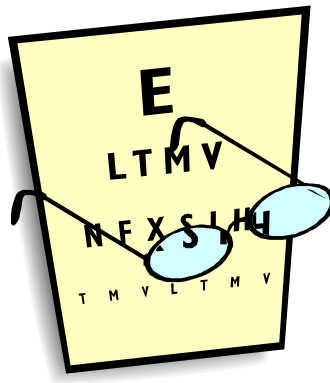
INSECT BITES & STINGS



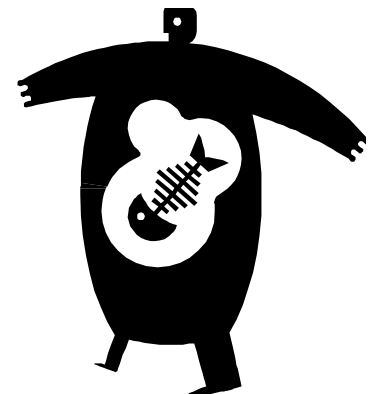
HEAD INJURIES



BURNS & SCALDS



EYE PROBLEMS



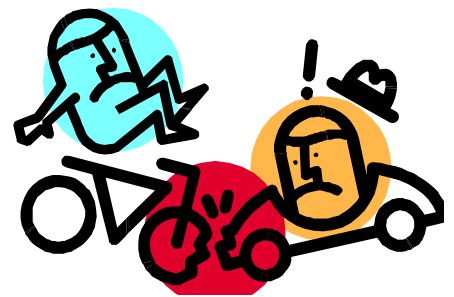
FOREIGN BODIES



**MINOR WOUND
INFECTIONS**



**CUTS AND
GRAZES**



**ROAD TRAFFIC
ACCIDENTS**

THE NEAREST MIU IS AT RIPLEY HOSPITAL, SLACK LANE, NEAR THE TOWN CENTRE